



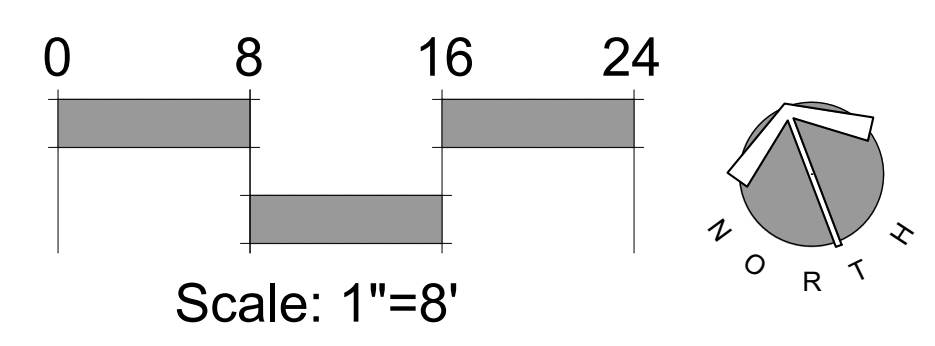
Magnolia Hall - Lot 6
 Boyd Mill Avenue, Franklin, Tennessee

- LEGEND**
- BROOM FINISHED CONCRETE
 - TOP-CAST CONCRETE
 - COBBLESTONE
 - DECOMPOSED GRANITE
 - PEA GRAVEL
 - NATURAL PATH - GRASS/MULCH
 - 4 RAIL FENCE - COST BY MAGNOLIA HALL SUBDIVISION
 - 4 RAIL FENCE - COST BY WILLIAM CAMPBELL HOUSE OWNERS
 - 4 RAIL FENCE - COST SHARED BY MAGNOLIA HALL / WILLIAM CAMPBELL HOUSE OWNERS

- REFER TO APPROVED SITE PLAN FOR CODE REQUIRED LANDSCAPE PLAN
- REFER TO ENHANCEMENT LANDSCAPE PLAN

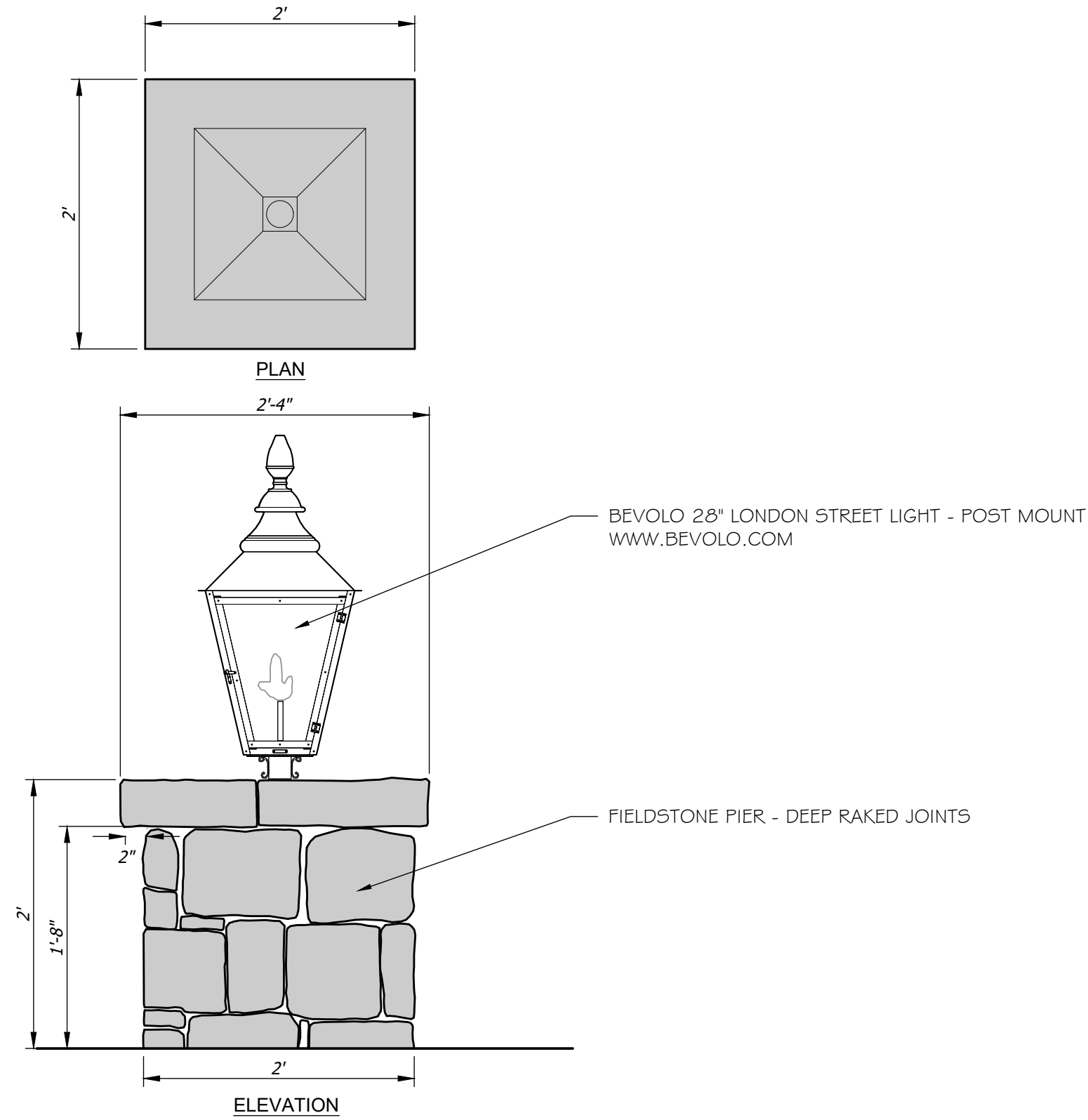
date: June 11, 2024
 revisions: July 1, 2024

project no. 19068
 scale: shown on plan

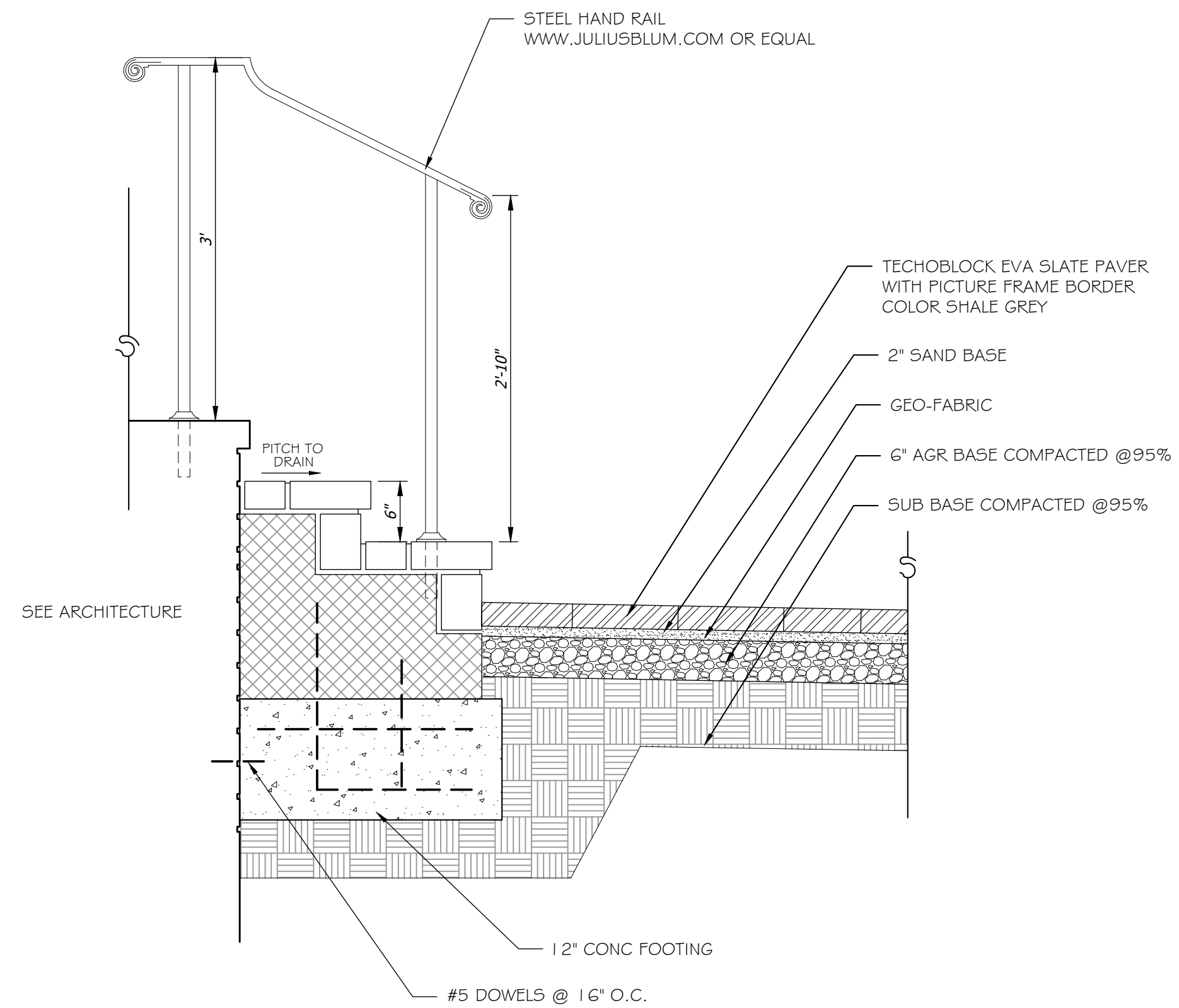


Landscape Plan

L-1.0



2 Stone Pier with Gas Lantern DETAIL #
 2.0 PLAN/ELEVATION $\frac{3}{8}'' = 1'-0''$



3 Step & Walk Section DETAIL #
 2.0 SECTION $1'' = 1'-0''$

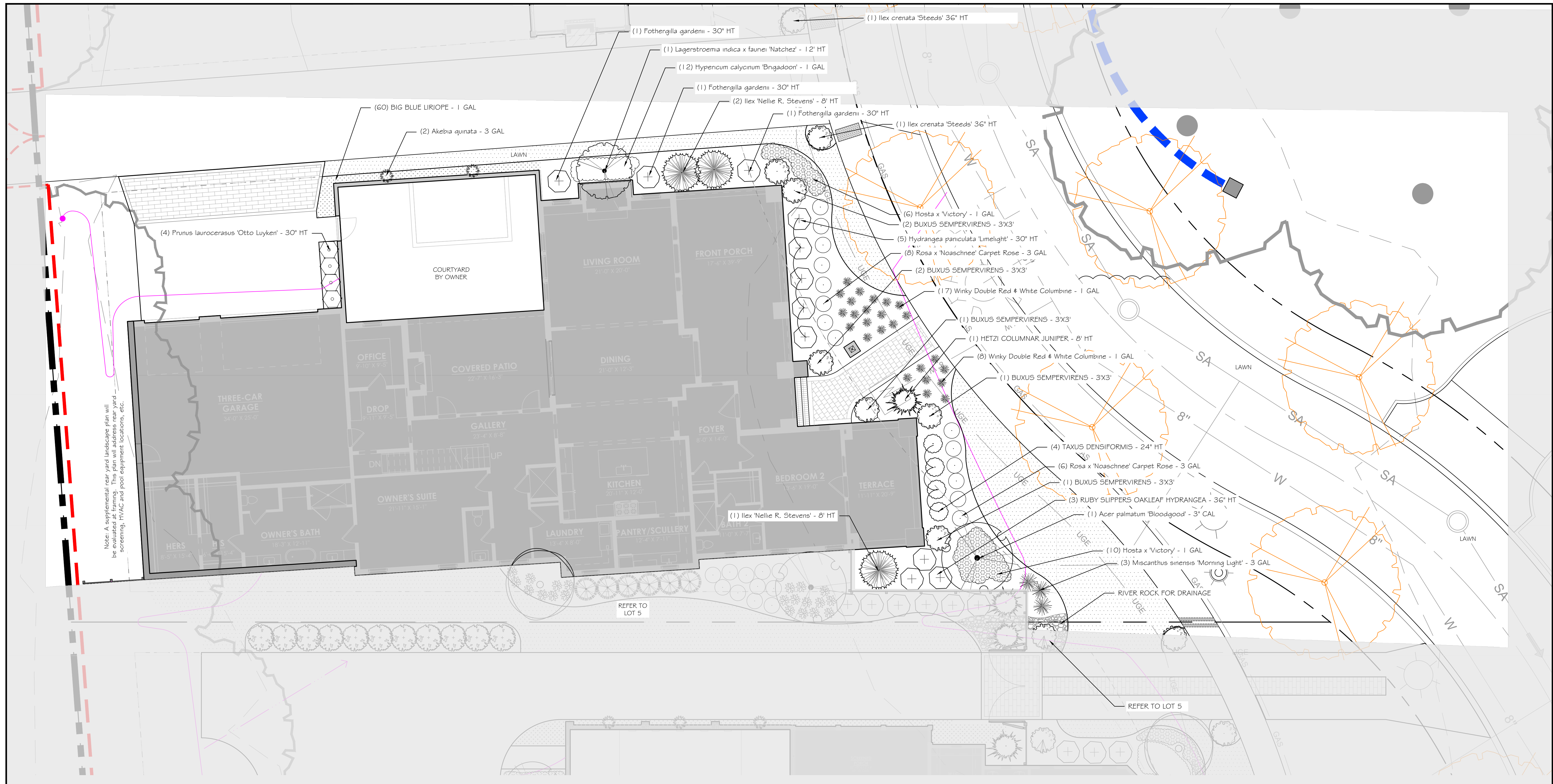
Magnolia Hall - Lot 6
 Boyd Mill Avenue, Franklin, Tennessee

Landscape Plan

date. June 11, 2024
 revisions. July 1, 2024

project no. 19068
 scale. shown on plan

L-2.0

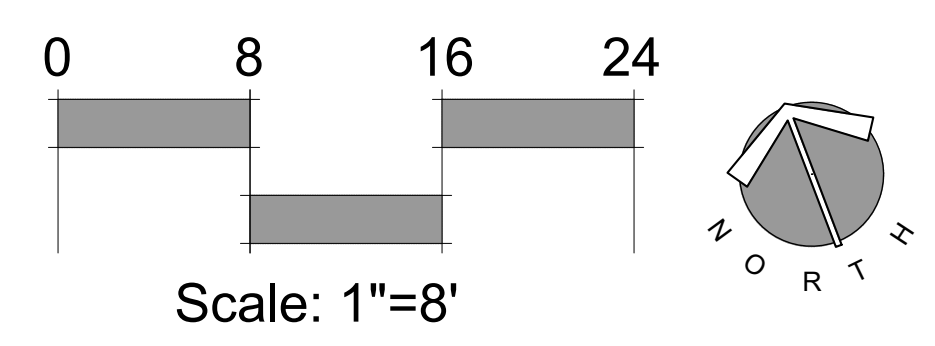


Note: A supplemental rear yard landscape plan will be evaluated. This plan will address rear yard screening, HVAC and pool equipment locations, etc.

Magnolia Hall - Lot 6
 Boyd Mill Avenue, Franklin, Tennessee

date: June 11, 2024
 revisions: July 1, 2024

project no. 19068
 scale: shown on plan



Landscape Plan

L-3.0